

ARkTic Rescue Operation

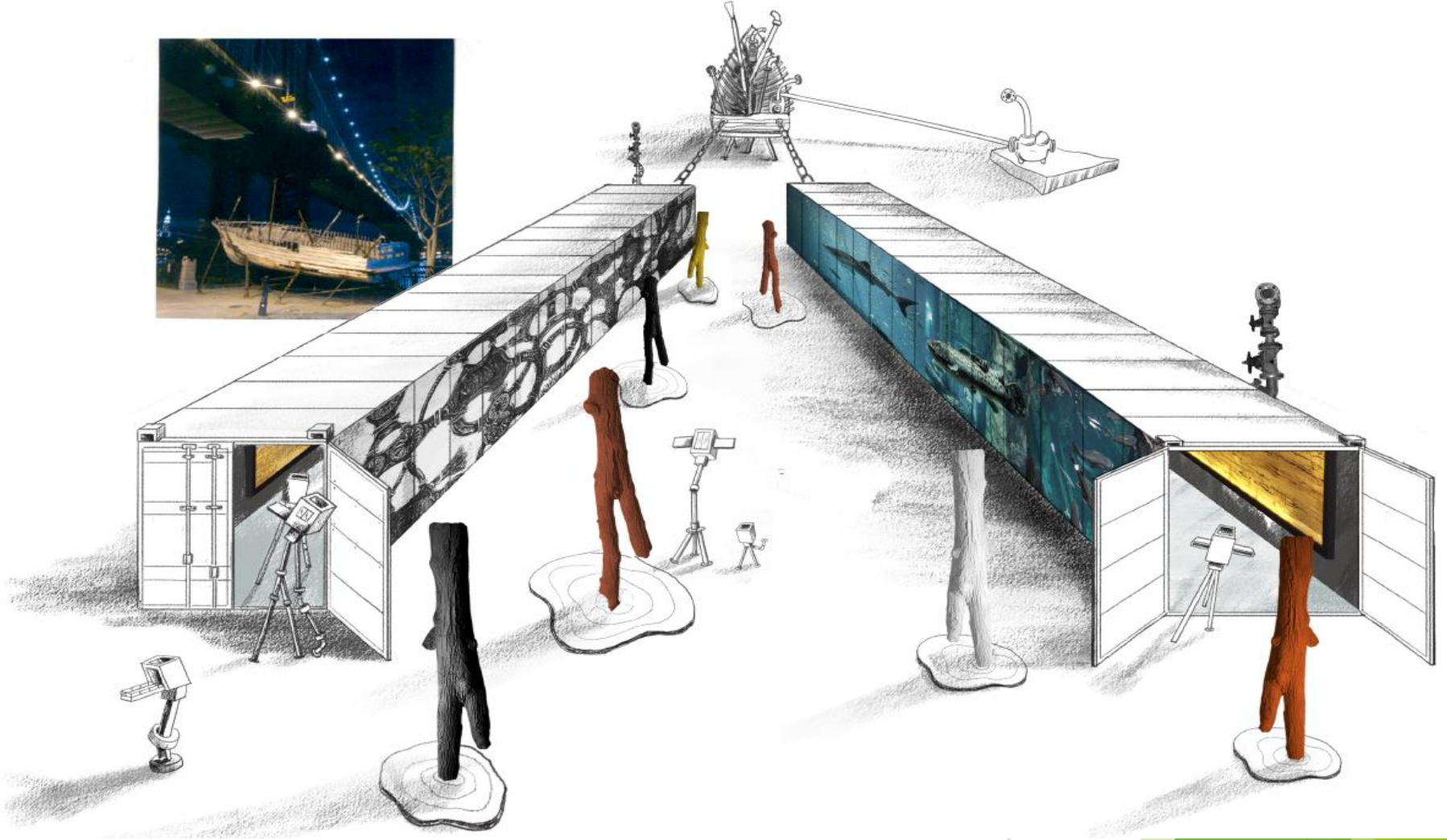
By Sculptor and Installation Artist
Richard Watts
Presented by: Gloria Trujillo

*A POETIC JOURNEY OF OUR
DIVERSE CULTURES, ROOTED ON
ONE SHIP WITH AN OPEN-ENDED
DESTINATION*

Concept

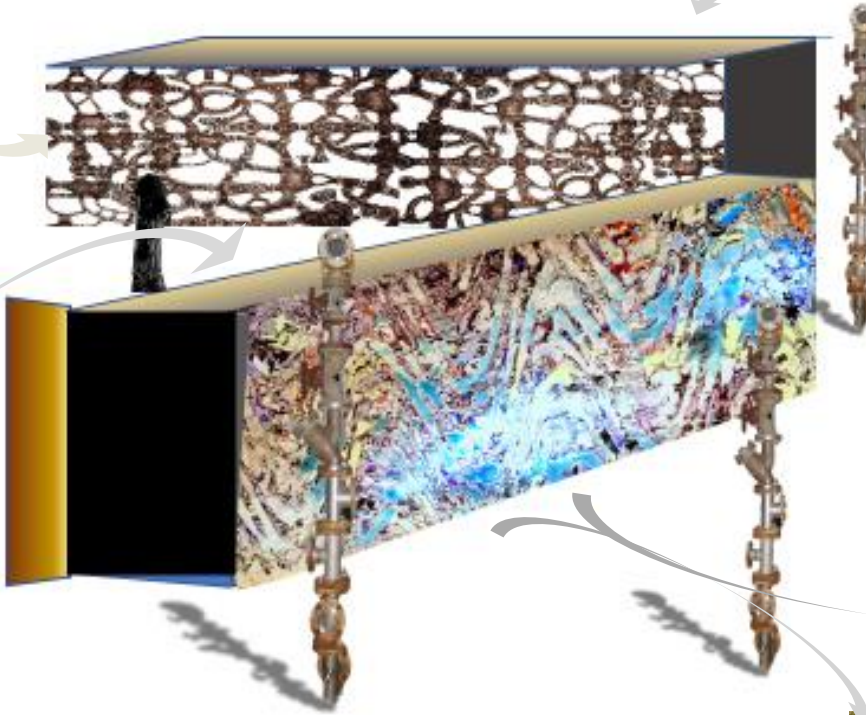
- ▶ *Immersive large-scale installation*
- ▶ A meaningful and whimsical narrative of contemporary issues – climate change, sustainability and urban infrastructure - related to delivery systems for water and energy. The installation also connects urban culture and communities with Nature in the City through pieces made from Toronto trees, especially endangered ones such as Ashes. Also references our Great Lakes environmental issues.
- ▶ Interactivity: visitors participate by responding graphically on one cargo container to environmental murals on the others.
- ▶ **The Ark:** a symbol of our shared journey toward the future
- ▶ **“The ARKtic Rescue Operation”:** the Installation also creates an open multi-media presentation and performance space envisioned for reflection and dialogue on the many diverse cultures within which we are situated: e.g. environmental film screenings, documentaries, talks, dance and poetry performances, etc., are possible.
- ▶ It can be transported in the cargo containers, to be presented in other locations, or presented as a permanent installation (full or partially)

Installation



Murals: 3 sides of cargo containers, with 4 artists, the 4th mural being audience response on one side, made over crezone signage panels, mounted on containers.

Mural No. 1: "Plan": Imaginary "urban songline" based on underground Toronto water system, and the historic valves, over architects' development drawings. **Richard Watts** 7 X 36 ft.



Our Space No.4 Audience participation wall/projection wall for audience response/film video screenings re environmental and social issues. 7 X 36 ft.

Mural No. 3. Artists: **Ixchel Suarez** and **Greg Angus**. A combination of: "Nagare" (river flow in Japanese) and "Memories of a Birch Tree" shown below

Mural No. 2: "Our Lakes": Based on the aquatic eco-system under the Great Lakes with a focus on invasive and endangered species, educational. To be designed by **Jocelyn Galipeau**. Galipeau exhibitions have included murals for Museum of Civilization in Ottawa 7 X 36 ft.



“FAMILY” OF CONDO DWELLERS SCULPTURES,

6 pieces small “child”, “adolescent” and “adult” on anthropomorphic structures life sized or slightly larger, made with Winterstone and resin, gas pipe, and other elements.

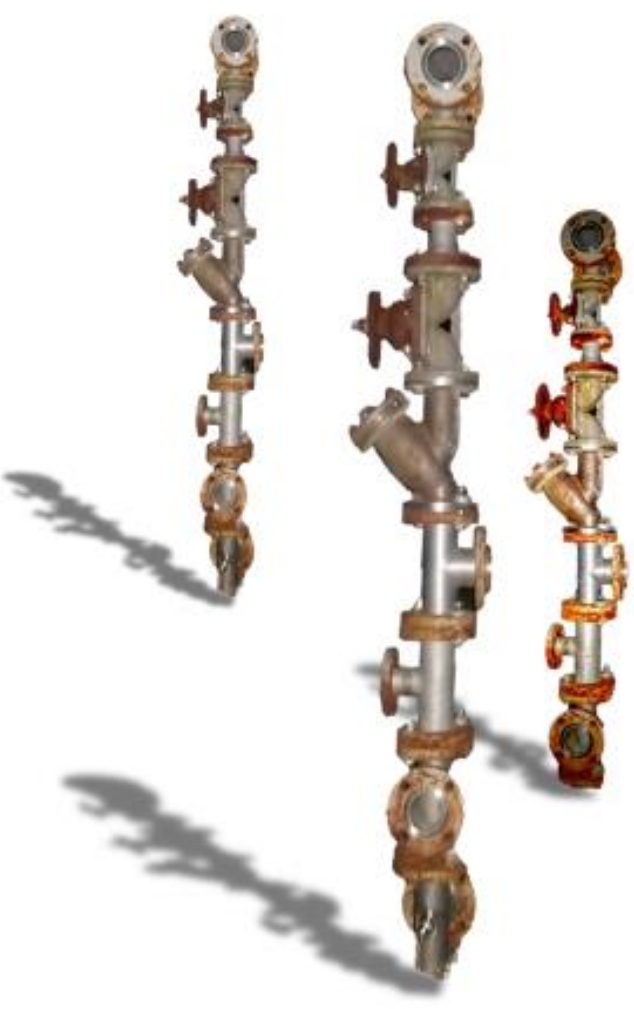
3 large (adult), 2 medium (adolescent) and 1 small size (child). Size varies from 2.5 to 7 ft H.

They also represent families, animated characters, or vintage box-cameras (Brownies)

This number is for this installation, could be changed.



Condo-Dwellers



Pipeline sculptures “*TRANSITION*”

PIPELINE COMPONENT SCULPTURES Approx. 8 – 12’ welded and footed

The whimsical Pipeline and Condo-Dwellers sculptures represent the energy and utility services that sustain us, as well as energy transformation.

Sculptures may be re-designed as “organic” forms.



bronze

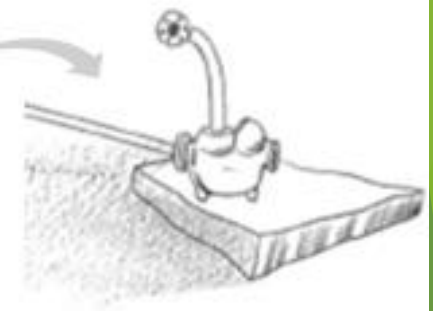


Winterstone and resin pigmented representing diversity
Or
Bronze patina

Forest shells/spirits

TREE CASTING SCULPTURES

Figurative organic forms in Winterstone – exterior marbled ‘cement’ with resin and stainless steel armatures, -- or bronze...from 6-9’ tall, on steel bases anchored to footings.



VINTAGE CAST IRON WATER VALVE “ANIMAL” SCULPTURES.

From the Toronto underground pipe-line system. For ARKtic Rescue Operation shown on a poured concrete “ice floe”...anchored...connected to Ark

Project description

- ▶ Large-scale installation in a 80 ft. X 120 ft. area that combines multiple media
 - ▶ **Ark:** 35' historic mahogany fishing boat from Georgian Bay, originally Hong Kong, pierced by utility pipes representing our journey towards a transitioning world. Was shown under the Manhattan Bridge, Brooklyn Bridge City Park 2007, site facilitated by Jeanne-Claude (Christo and Jeanne-Claude) Runner-up Toronto Floating Art Competition 2020, in re-application 2022.
http://www.rawart2.com/Richard_Watts_Ark_NYC_press_release.pdf
 - ▶ https://youtu.be/YWtDXfUv_Ck
 - ▶ 7 Figurative and whimsical tree castings, 3 pipeline component sculptures, 6 “Condo-Dwellers” sculptures. (approx.) Some of the sculptures are multicoloured representing multiculturalism.
 - ▶ The whimsical **Pipeline Transition** and *Condo-Dwellers* sculptures represent the energy and utility services that sustain us, as well as energy transformation. They also represent families, animated characters or vintage box-cameras (Brownies)
 - ▶ “Animal” vintage cast-iron Toronto water valve “animal(s)”, caught on “ice-floe” being rescued by “Ark”.

Project description *continued*

- ▶ Two 40 ft. cargo containers representing high levels of consumption, carbon emissions, and global trade, with exterior murals and interior Museum of back-lit *Earth Etchings* made from Toronto trees such as those recently exhibited in the Tom Thomson Museum 2019.
 - ▶ 4 Murals include:
 - ▶ *Mural No 1: "Plan"*: Imaginary "urban songline" based on underground Toronto water system, and the historic valves, over architects' development drawings. 7 X 36 ft.
 - ▶ *Mural No. 2: "Our Lakes"*: Based on the aquatic eco-system under the Great Lakes with a focus on invasive and endangered species, educational. Galipeau exhibitions have included murals for Museum of Civilization in Ottawa. 7 X 36 ft.
 - ▶ *Mural No. 3*: Title TBD. Artists: **Ixchel Suarez** and **Greg Angus**. A combination of: "Nagare" (river flow in Japanese) and "Memories of a Birch Tree" shown below
 - ▶ *Mural (wall) No. 4: "Our Space"*: graphic responses to the installation by visitors. 7 X 36 ft.
- ▶ Timeline: 7-month execution time, March-September 2022, opening on Nuit Blanche beginning of October and last part of ArtWorx.

About Richard Watts

Richard Watts is an environmental installation artist whose work explores global issues related to climate change, deforestation, water, and sustainability, in the context of North American history.

Watts has lived and worked in Toronto since 1987. In 2007, his studio relocated to a converted barn on 65 acres of forest on the edge of wilderness two hours from the city. It is also an environmental art centre. He has been exploring connections between urban culture, the environment, and the Canadian landscape for over 30 years. He is also an experienced contractor, and set builder for the film industry.

His latest exhibition, *Earth Etchings*, was a solo survey at the Tom Thomson Museum in 2019. By using the earth as an etching plate, 'printing' older growth trees, rock faces along rivers, old boats and canoes, surfaces in derelict buildings, Watts creates high detail vulcanized latex and gauze 'x-rays' of the Canadian landscape. When backlit, these glow like illuminated manuscripts, the earth's surface warming, or forests on fire. Some works hang like scrolls and others are presented framed more connected to painting. Either can be front or back-lit.

A recent series, *Insect Writing*, imprints the patterns insects 'carve' on trees, filling them with carbon and metallic pigments to create a metaphor for climate change, fossil fuels, and mining, resulting in patterns that read like musical scores or Cuneiform writing.

In his *Forest Shell* series, anthropomorphic castings from fallen trees are inverted to become figurative and evocative of the connection between our bodies, art history and Nature.

<https://youtu.be/7maCDwo3B7Y>
[artist.html](#)

<https://www.richardwattssculpture.com/about-the-artist.html>

@rwattsart

Collaborators

- ▶ **Project Manager:** Gloria Trujillo has over 30 years of experience in management and administration in the corporate and non-profit sectors. She co-founded and managed an art foundation and has served as a board member and volunteer in many arts, culture, and community initiatives in Toronto.
- ▶ **Muralists** include: **Richard Watts**, **Greg Angus** (<https://www.instagram.com/greg.angus/>), **Ixchel Suarez** (<https://www.ixchelsuarez.com/>) and **Jocelyn Galipeau** (artistech.ca) <https://www.instagram.com/galipeaujocelyn/>
- ▶ **Greg Angus** – Toronto LGBTQ artist who works with enlarged and morphed fingerprints in encaustic, evoking identity politics, water-currents, satellite images of global temperature zones, and Aikido movements (as he is a highly ranked Aikido Master). Exhibitions have included the Canadian Embassy in Japan.
- ▶ **Ixchel Suarez** -holds a Master of Museum Studies as well as a Postgrad in Contemporary Textile Art. She has been an instructor, curator, professor, researcher, community engagement coordinator, and lecturer. She was also founding director of the Oak Heights Art Gallery, Oakville Art Studio, and Textil Creative (Mexico City). Ms. Suarez has collaborated in many multimedia projects in Canada and abroad.
- ▶ **BetterCreative.ca** – broad range of experience working with diverse populations
- ▶ **Kai Reimer-Watts** is a PhD candidate in Community Psychology at Wilfrid Laurier University, with a focus on environmental activism. His film *Beyond Crisis* is a feature documentary that has shown globally in alternative film Festivals and will be presented in the space. His work is dedicated to uplifting multicultural voices for climate action and social justice throughout the community. <https://www.bettercreative.ca/> <https://www.beyondcrisisfilm.com/>
- ▶ **Abhilasha Dewan** is an illustrator/animation artist whose work includes the online animation for Lawrence Hill's *The Illegal* as well as numerous projects for the Centre for International Governance Innovation. (CIGI) <https://www.bettercreative.ca/>

ARTWORK DESCRIPTION	ARTWORK PRICE		INSTALLATION COST	TOTALS
ARK SCULPTURE		\$150,000	20,000	170,000
FOREST SHELLS/TREE CASTINGS <i>Research Casting International Trenton</i> Winterstone and Resin Bronze	Medium size (6ft) Large size (8Ft)	13,000 15,000	1,500 1,500	7 sculptures 100 K
	Medium size (6ft) Large size (8Ft) Beyond 8ft TBD	26,000 44,000	4,000 4,000	Bronze TBD
CONDO DWELLERS (3 large (adult), 2 medium (adolescent) and 1 small size (child))	Small (child) Medium (adolescent) Large (adult)	6,500 8,000 10,000	1,500 each	6 sculptures 52,500
PIPELINE COMPONENT SCULPTURES Title: "TRANSITION"	8 Ft 10 Ft 12 Ft	14,000 16,000 20,000	1,500 each	1 of each 50 K
"ANIMAL" WATER-VALVE SCULPTURES (HERD) Vintage historic elements limited edition, 12 originals. Castings TBD	Medium Large	24,000 35,000	3,000 each	1 large on ice floe 38 K
MURALS	Mural I Mural II Mural III	14,000 14,000 14,000	N/A	42 K
CANOE PEOPLE SINGLE <i>(all made from Toronto Trees)</i> 65" X 80"		20,000		TBD upon number of pieces selected, and if permanent or temporary
CANOE PEOPLE TRIPTYCH 80" X 16'		50,000	TBD on light and wiring	
INSECT WRITING PIECES SMALL 32" x 36" LARGE 32" x 72"		6,000 12,000		
Significant materials: Cargo containers 8Ft H, best quality on I-Beams for snow vented with fans for summer		15,000 each	Contractor management 2,500	33 K
Electrical (wiring, fans, interior/exterior lighting...) Commercial electrician		-	10,000 est.	10 K

***Earth Etchings TBD / Bronze tree castings if chosen TBD/ does not include Project Management, or HST. *** Prices are for FULL installation.** If acquired separately, a 15 % would be added

495,000 K

Project background

- ▶ *Ark* first showed 2005, De Leon White Gallery, TO.
- ▶ *Ark* then showed 2007 in DUMBO (Down Under Manhattan Bridge), Brooklyn Bridge City Park. It received a Star feature and French TV coverage. Jeanne-Claude (Christo and Jeanne-Claude) helped facilitate siting.
- ▶ Abbreviated version submitted to *Artworx TO: Toronto's Year of Public Art 2021*, postponed until September 2022
- ▶ Runner-up, *Waterfront Toronto Temporary Floating Art competition, 2020. Timeline too short, budget too low.*
- ▶ *Re-application 2022.*
- ▶ Large *Earth Etchings* exhibited at the Tom Thomson Museum, 2019. Future exhibition MA Rouyn-Noranda 2023, others.
- ▶ THE MUSEUM. Kitchener. 2024

Artworx Letter

▶ **From:** ArtworxTO ArtworxTO@toronto.ca

▶ **Subject:** ArtworxTO Partnership Application

▶ **Date:** October 6, 2020 at 11:17 AM

▶ **To:** richard@rawart2.com

▶ Dear Richard,

▶ Thank you for your partnership application for ArtworxTO: Toronto's Year of Public Art 2021. The decision-making process was a difficult one, with many worthwhile Toronto-based artists and organizations applying for a limited amount of funding. We received a tremendous response from the arts community, receiving approximately 250 applications. In terms of funding, the program was oversubscribed by 512%.

▶ Unfortunately your project, Mobile Art Circus: Arctic Rescue Operation, was not selected by our Peer Review Panel for funding. That said, we would love to support this project at all other tiers of partnership. This could include leSers of support for other funders, site matching, assistance obtaining permits, and inclusion in our extensive promotion and marketing campaign and digital platforms.

▶ Please let us know if you would be interested in any of the aforementioned services.

▶ Please note a list of all funded projects will be available shortly on the ArtworxTO website. Should you like feedback on your proposal, please email ArtworxTO@toronto.ca with the subject line "Partnership Feedback".

▶ Thank you for taking the time to prepare an application and for your interest in cultural offerings in the City of Toronto. In the end, there simply were not sufficient resources from which to fund all worthy requests.

▶ Kind regards,

▶ ArtworxTO: Toronto's Year of Public Art 2021

▶ ArtworxTO@toronto.ca

Artworx

► Update letter

► On Mar 2, 2021, at 2:21 PM, ArtworxTO <ArtworxTO@toronto.ca> wrote:

► Hi Richard,

►

► The Mayor's Office has decided to postpone the launch of ArtworxTO: Toronto's Year of Public Art until the Fall. It will run from September 2021 through to September 2022, so many of our projects will happen in 2022 instead.

►

► I hope this helps and good luck with your grant applications!

► Katrina

►

Other sources of funding

Subject to approval

- ▶ ArtworxTO - site matching, assistance with permits, inclusion in promotion and marketing, including digital
- ▶ Canada Council of the Arts
- ▶ Ontario Arts Council (Established Grant 2021)
- ▶ City of Toronto

Greg Angus



Greg Angus "*Fingerprints*" and Ixchel Suarez "*Time...*" art visions. Nagare -left- (ANGUS) / Memories of a Birch Tree - below (SUAREZ)

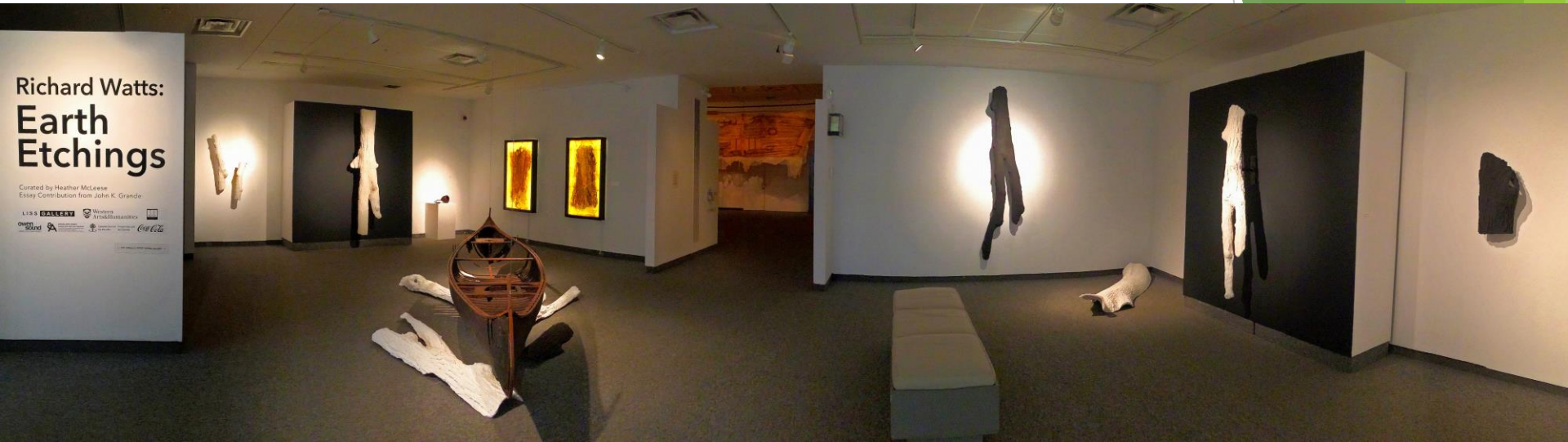
Angus is a Toronto LGBTQ artist who works with enlarged fingerprints in encaustic, evoking identity politics, water currents, satellite images of global temperature zones, and Aikido movements. Exhibitions have included the Canadian Embassy in Japan.

Suarez is a textile and multi disciplinary artist who works with textures of nature and relationships between photography and time. Exhibitions have included Beijing Biennale 2020. 7 X 36 ft.

Murals, on 3 sides of cargo containers, with 4 artists, the 4th mural being audience response on one side...and can double as projection screens for events...on crezone exterior signage panels.

Ixchel Suarez





Tom Thomson Museum 2019





ARK in Brooklyn under the Manhattan Bridge

